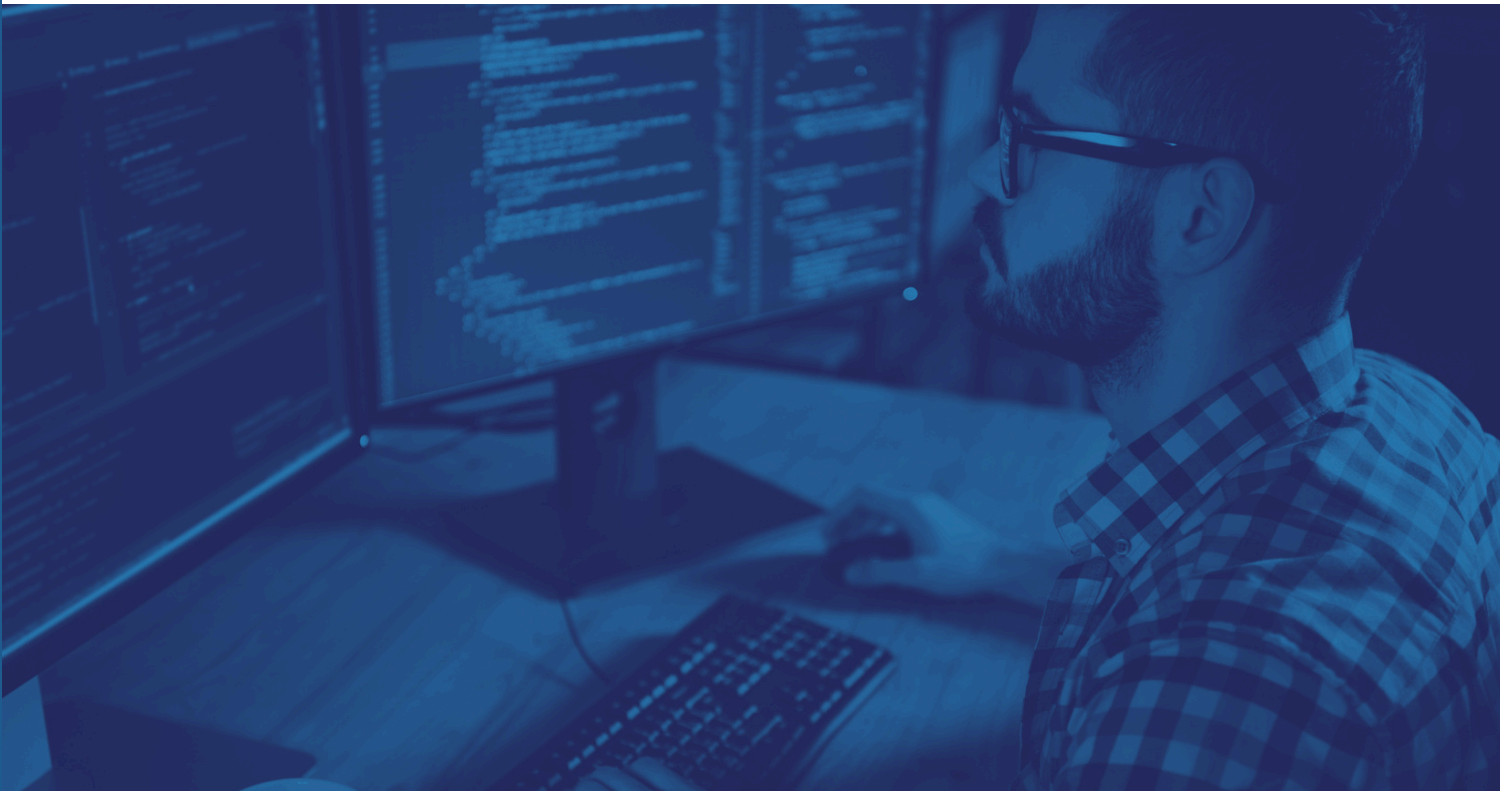


LINUX FOR ADVANCED USERS

SECURE, SCALE, AUTOMATE

Intensive seminar: IT administration and
network management for professionals



**Beyond the Basics: Practical Linux
Security & Administration**



Table of Contents

Linux for Advanced Users - Aim of the course	2
Who is this course for?	3
What will you learn?	4
Modules	5
Course Dates	9
How to Register?	10

Linux for Advanced Users

Aim of the course

The Linux for Advanced Users course is designed for IT professionals and system administrators looking to deepen their expertise in Linux-based systems, security, and administration. This course provides hands-on experience with real-world scenarios, allowing participants to manage, secure, and optimize Linux environments effectively.

Who is this course for?



Aspiring IT security consultants, pentesters and red teamers

Do you want to learn how to harden Linux systems and protect them against attacks? This course provides you with hands-on security skills.



Prospective system administrators and network technicians

Ideal for anyone who wants to professionally manage Linux environments and work in complex IT infrastructures.



IT professionals who want to expand their technical knowledge

Do you already have experience with Linux and want to deepen your knowledge in administration, security, and automation?



IT leaders who want to build a deeper technical understanding

This course provides a solid technical foundation to develop secure & efficient IT strategies.

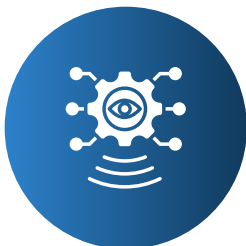
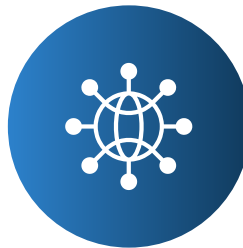
What will you learn?

Upon completion, participants will be able to:



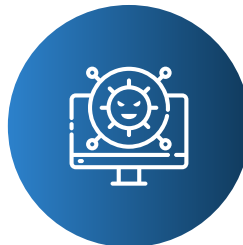
Configure and manage Linux systems efficiently.

Secure Linux environments using best practices and advanced techniques.



Automate administrative tasks to enhance system performance and reliability.

Detect and mitigate security threats within Linux-based infrastructures.



Modules

1

BASICS OF NETWORKS

- Communication protocols: TCP/IP, UDP, ICMP
- Network services: DHCP, DNS, NAT and their role in IT environments
- routing network segmentation

2

REMOTE SERVICES: SSH

- Secure remote access with SSH
- Best Practices for SSH Server Configuration and Key Management
- Securing SSH services: port knocking, MFA

3

DHCP SERVER:

- How DHCP works and its role in the network
- DHCP protocol and configuration options
- Securing DHCP servers: IP address reservations and secure configuration
- Misconfigurations and their impact on network security

Modules

4

NAME RESOLUTION: DNS (BIND/DNS)

- Structure and Function of DNS
- DNS protocol and security risks (DNS spoofing, cache poisoning)
- Configuration of a Bind/DNS server and security mechanisms
- Typical mistakes and best practices for securing DNS servers

5

EMAIL SERVERS: POSTFIX & DOVECOT

- Introduction to email services: Postfix as MTA, Dovecot as IMAP/POP3 server
- SMTP, IMAP, POP3 and their security risks
- Security mechanisms: SPF, DKIM, DMARC, SSL/TLS
- Best Practices for Hardening Email Servers

Modules

6

WEB / HTTP (APACHE / TOMCAT)

- Structure and function of web servers (Apache HTTP Server, Tomcat)
- Protocols: HTTP, HTTPS and their role in web communication
- Securing web servers: SSL/TLS, secure configuration
- Practical examples of configuration errors and security risks

7

FILE SERVER (SAMBA/NFS)

- Structure and Function of File Servers: Samba and NFS
- File sharing and permissions: configuration options and best practices
- Security risks with insecure file servers: authorization problems, unprotected shares
- Securing file servers: rights management, encryption and authentication
- Typical vulnerabilities in file server environments and how to fix them

Modules

8

CONTAINERS AND AUTOMATION

- Introduction to containerization and using Docker for system administration
- Automating administrative tasks with shell scripts and Ansible

Course Dates

Duration

- 5 Days
- Daily Sessions: 8:30 – 16:30

Delivery Mode

- Fully online, offering interactive theory and hands-on labs.

Key Dates

- 24. July - 30. July 2025

Cost

- €2.595,- (includes all course materials and certification exam fees)

How to Register?

Step 1

Go to the official [**Linux for Advanced Users**](#) course page.

Step 2

Fill Out the Registration Form

- Select your preferred course date, whether you are registering as a private individual or a company representative and your personal and/or company details.
- Submit the form – no payment is required at this stage.

Step 3

After submitting your registration, one of our experts will reach out to you. We'll discuss your goals, expectations, and any questions you have.

Step 4

Once we finalize the details together, you'll receive the payment instructions.

- Secure your spot by completing the payment.
- We'll confirm your enrollment and provide access to the course materials.



WHO WE ARE

2016

Founded

50+

Team-Members

1000+

Assessments
carried out

100%

System Takeovers

OUR MISSION

Saving and protecting lives by
sustainably securing the digital
infrastructure of companies.

OUR VISION

We want to make IT
security go viral.

HOW WE SUPPORT YOUR INFORMATION SECURITY

Penetration Testing

IT Security Consulting

Ethical Hacker Courses

“Protecting your world,
no matter where you are.”

